

7 The Hollies, High Street, Keswick, Cumbria

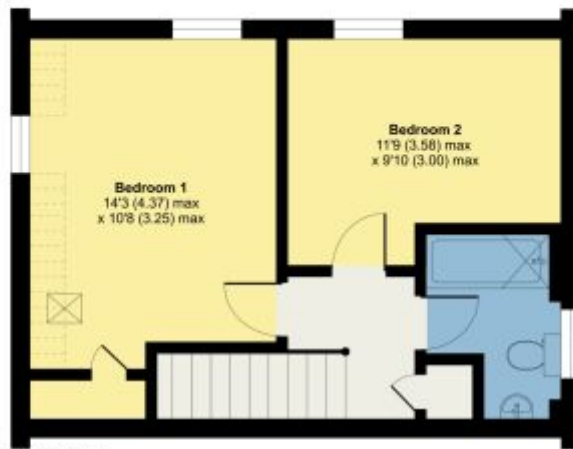
Denotes restricted
head height

Approximate Area = 755 sq ft / 70.1 sq m

Limited Use Area(s) = 18 sq ft / 1.6 sq m

Total = 773 sq ft / 71.8 sq m

For identification only - Not to scale



FIRST FLOOR



GROUND FLOOR